

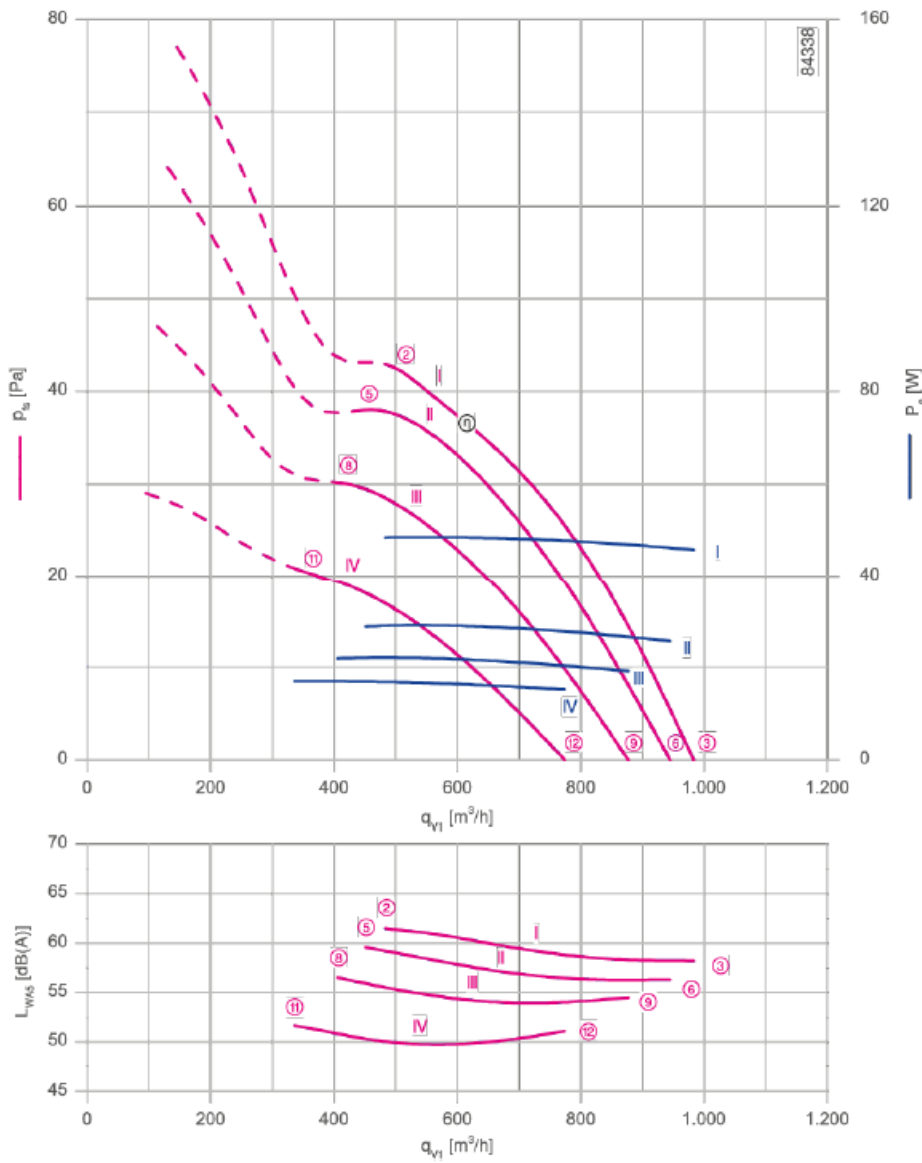
1. Product specification - Technical data

| | |
|-----------------------------------|--|
| Article number | 140298 |
| Type | FN025-4EK.W8.V7 |
| Designation | Axial fan with sickle blades |
| Rated values | 1~230V 50Hz P ₁ 48W 0.24A ΔI=0% 1370/min 1.5uF/400V 55°C 1~230V 60Hz P ₁ 55W 0.23A ΔI=0% 1600/min 1.5uF/400V 70°C |
| Electrical connection | Terminal box K09 |
| ErP Data | Not subject to the regulations of ErP directive (P ₁ < 125 W) |
| Type of protection | IP44 EN60034-5 |
| Thermal class | THCL155 |
| Min. operating temperature | -25°C |
| Connection diagram | 1360-177X |
| Rating plate | 1x fixed |
| Fitting position | H/Vu/Vo |
| Motor protection | thermal contact |
| Impregnation | Moisture and hot climate protection |
| Condensation | Condensation water holes in stator/rotor open |
| Quality of bearings | ball bearing with long-time lubrication |
| Material Rotor | Aluminium |
| colour rotor | RAL 5002 (ultramarine blue) |
| Material blades | High Performance Composite Material |
| Colour blades | black |
| Guard grille type | ring grill |
| Painting mot.suspens | Motor suspension powder-coated resistance class 2 (L-TI-0585) |
| colour suspension | RAL 9005 (jet black) |
| Weight | 2.50 kg |

Hata! Belgede belirtilen stilde metne rastlanmadı.
 Hata! Belgede belirtilen stilde metne rastlanmadı.

2. Characteristic curve

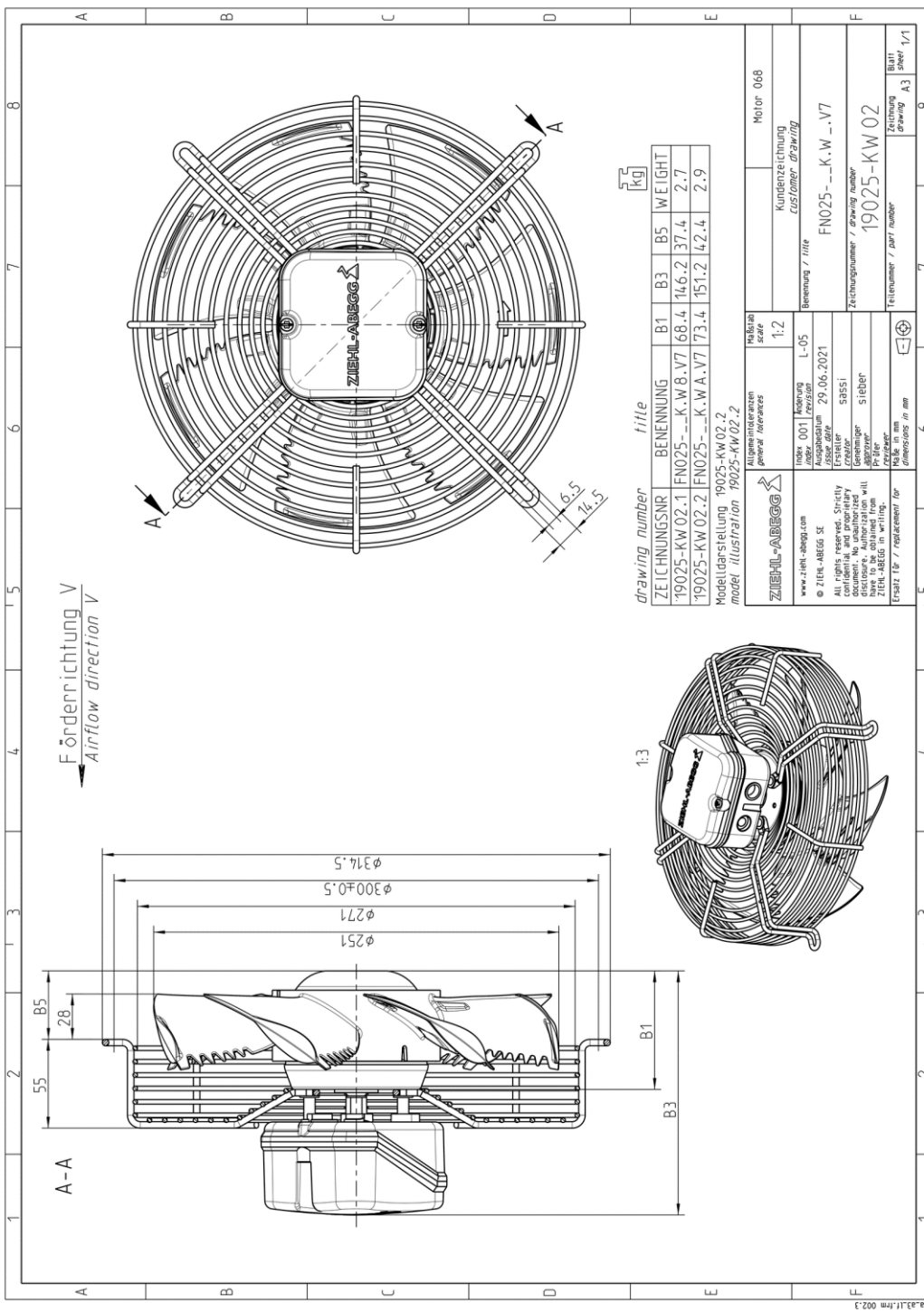
Frequency: 50 Hz



The Royal League Die Königsklasse

Hata! Belgede belirlen stilde metne rastlanmadı.
Hata! Belgede belirlen stilde metne rastlanmadı.

3. Drawing



Dimensions in m

www.ziehl-abegg.com
ErstellsQQQXXXYYdate
© ZIEHL-ABEGG SE

Movement by Perfection | Bewegung durch Perfektion

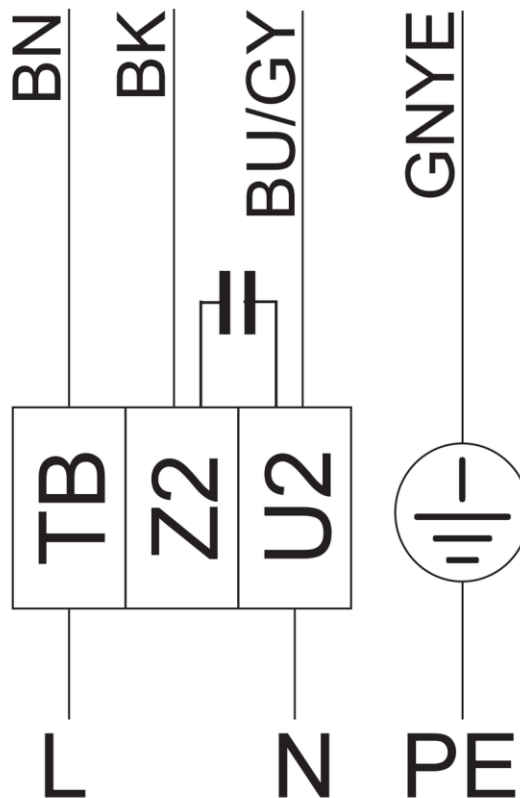
Hata! Belgede belirtilen stilde metne rastlanmadı.
 Hata! Belgede belirtilen stilde metne rastlanmadı.

4. Connection diagram

1~ Motor mit Kondensator und Thermostatschalter.

1~ motor with capacitor and thermostatic switch.

177X-04



- BN - braun, brown
- BK - schwarz, black
- BU/GY- blau oder grau, blue or grey
- GNYE - grün-gelb, green-yellow